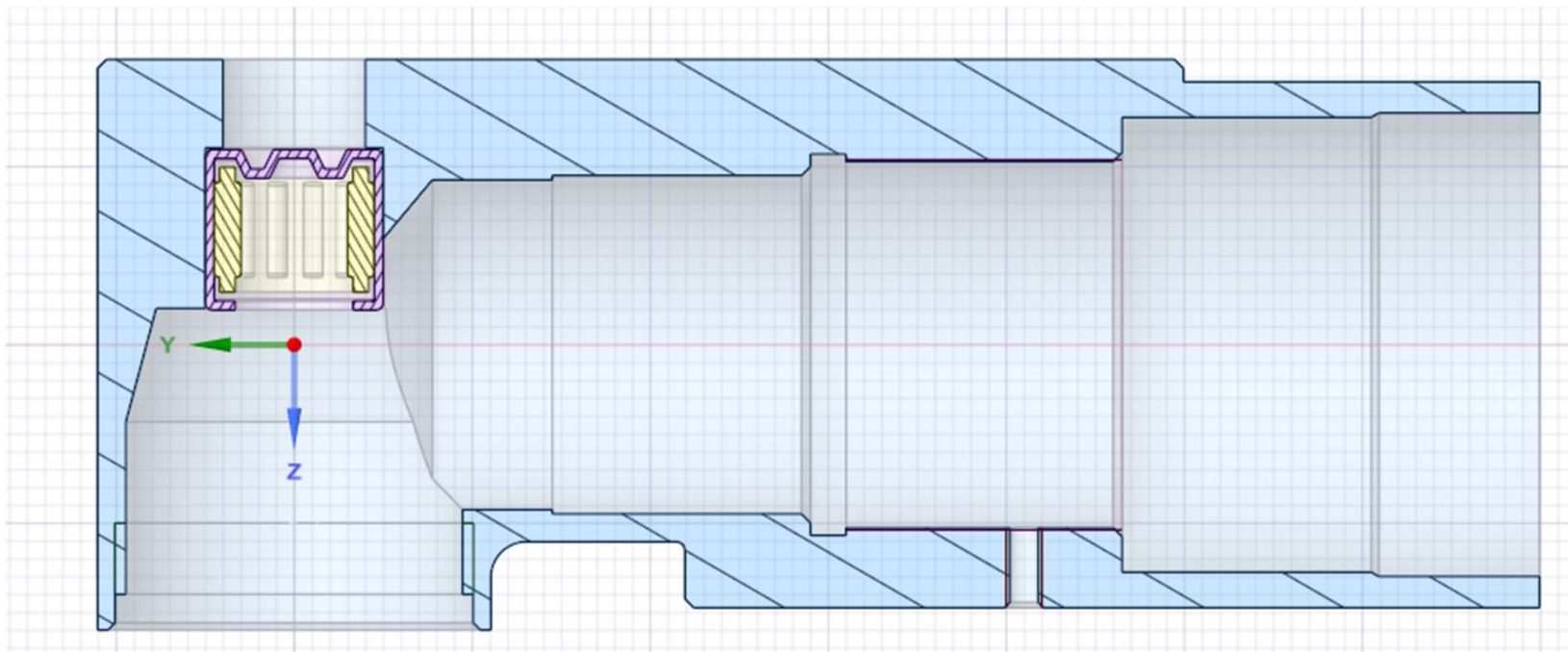


Assembly Process

組裝流程

Step 1 步驟1

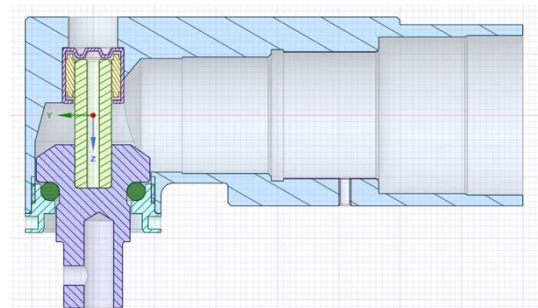
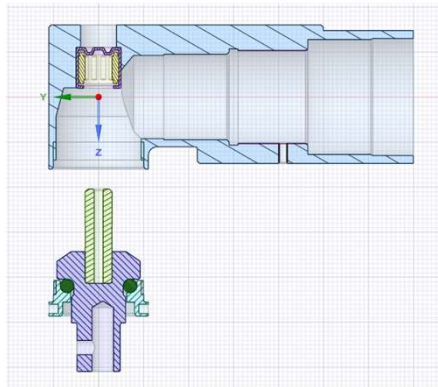
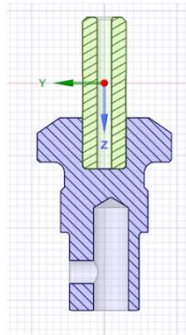


Press in the needle bearing

壓入滾針軸承

Step 2

步驟2



使用乾冰將插銷冷卻至 -200°F （華氏），
擦乾水氣後塗上 Loctite 638 螺絲膠，並
將插銷裝入錐齒輪中

1. Chill pin to -200 degree F using dry ice, wipe off moisture and apply Loctite 638, and put the pin in the bevel gear.

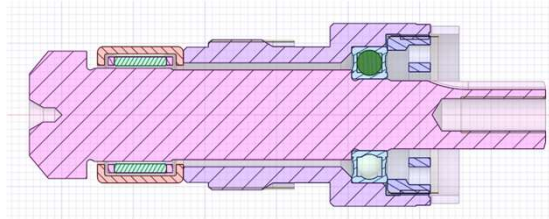
2. Assemble the subassembly.

組裝子組件

3. Thread in the subassembly.

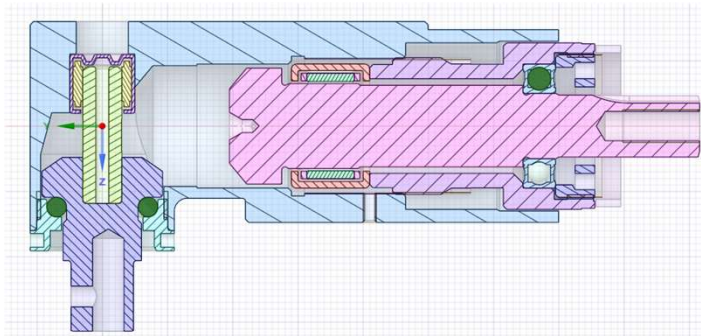
將子組件旋入

Step 3 步驟3



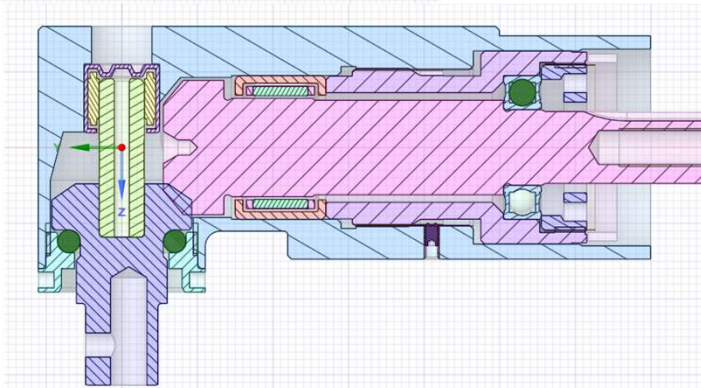
1. Assemble the subassembly.

組裝子組件



2. Thread in the subassembly, and then thread in again to push the needle bearing in.

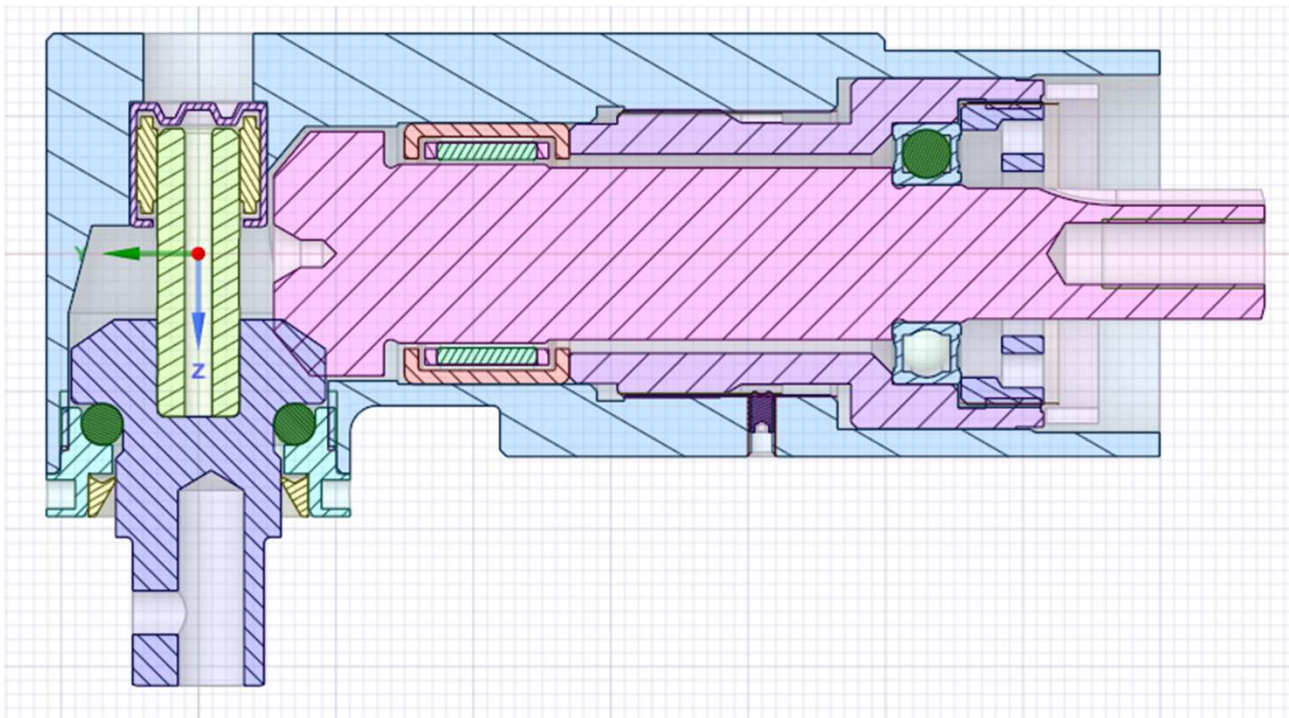
將子組件旋入，接著再次旋入以推入滾針軸承



3. Thread in until the cogging can be felt, and reverse the subassembly to the nearest slot, at last thread in the set screw.

持續旋入直到感受到卡點（齒合感），然後將子組件反轉至最近的卡槽，最後旋入止付螺絲

Step 4 步驟4



Assemble the seal and retainer that is not shown.

安裝未顯示的密封件與固定環